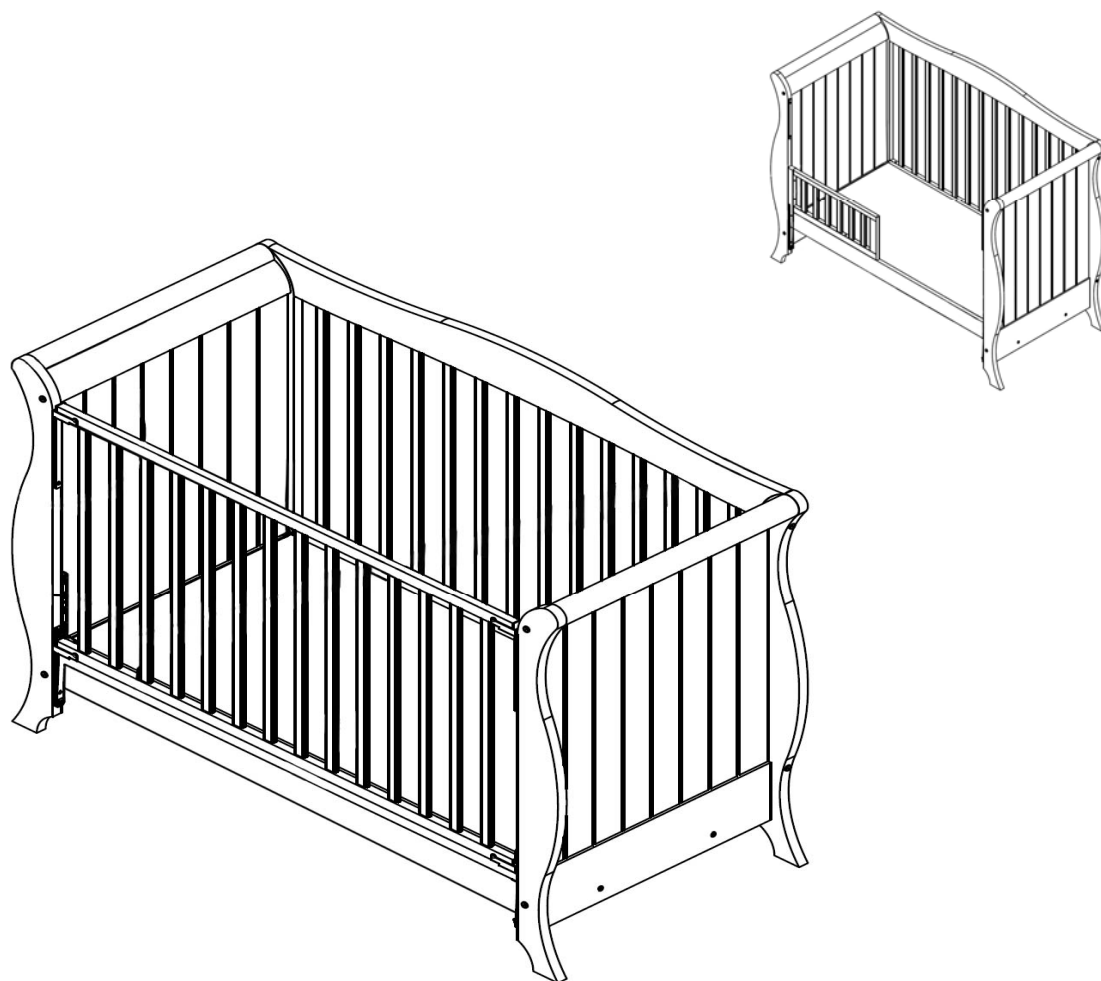




## HOLLIE SLEIGH-BED

### *Instructions for assembly & use*



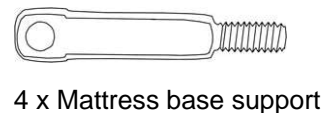
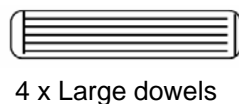
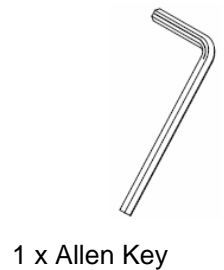
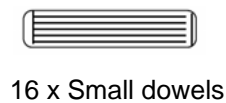
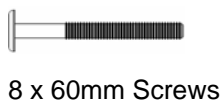
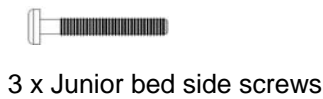
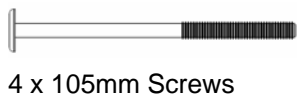
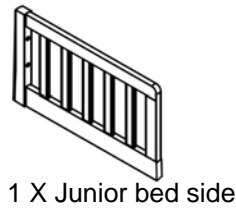
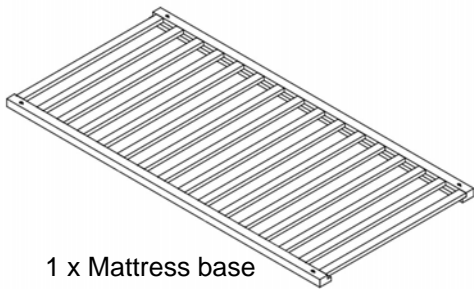
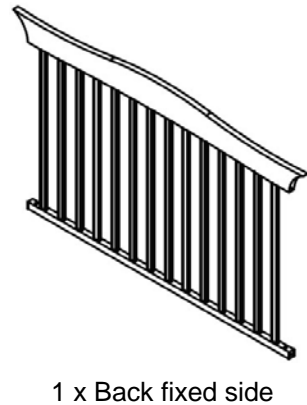
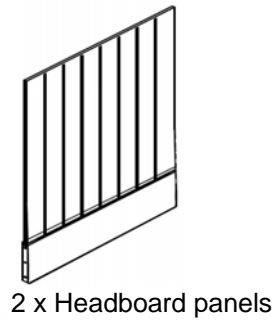
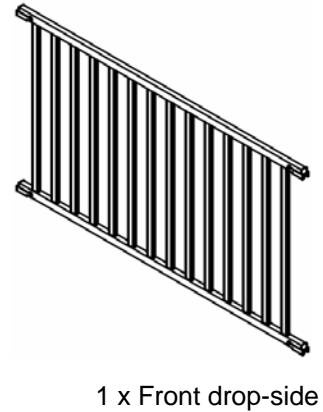
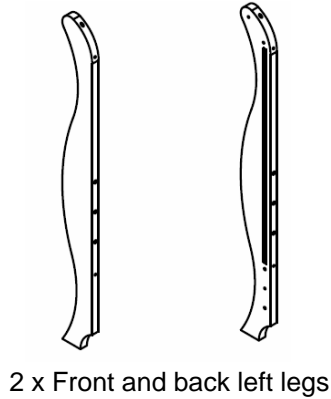
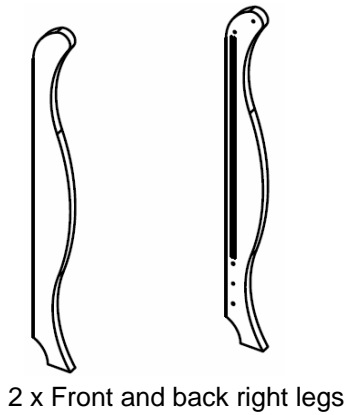
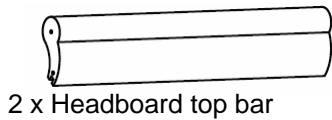
IMPORTANT, RETAIN FOR FUTURE REFERENCE: READ CAREFULLY

# HOLLIE SLEIGH-BED

## Instructions for assembly & use

Unpack the Sleigh-Bed and identify the component parts listed above. Do not discard any packaging until you have identified all the components and fittings.

### Components & Fittings

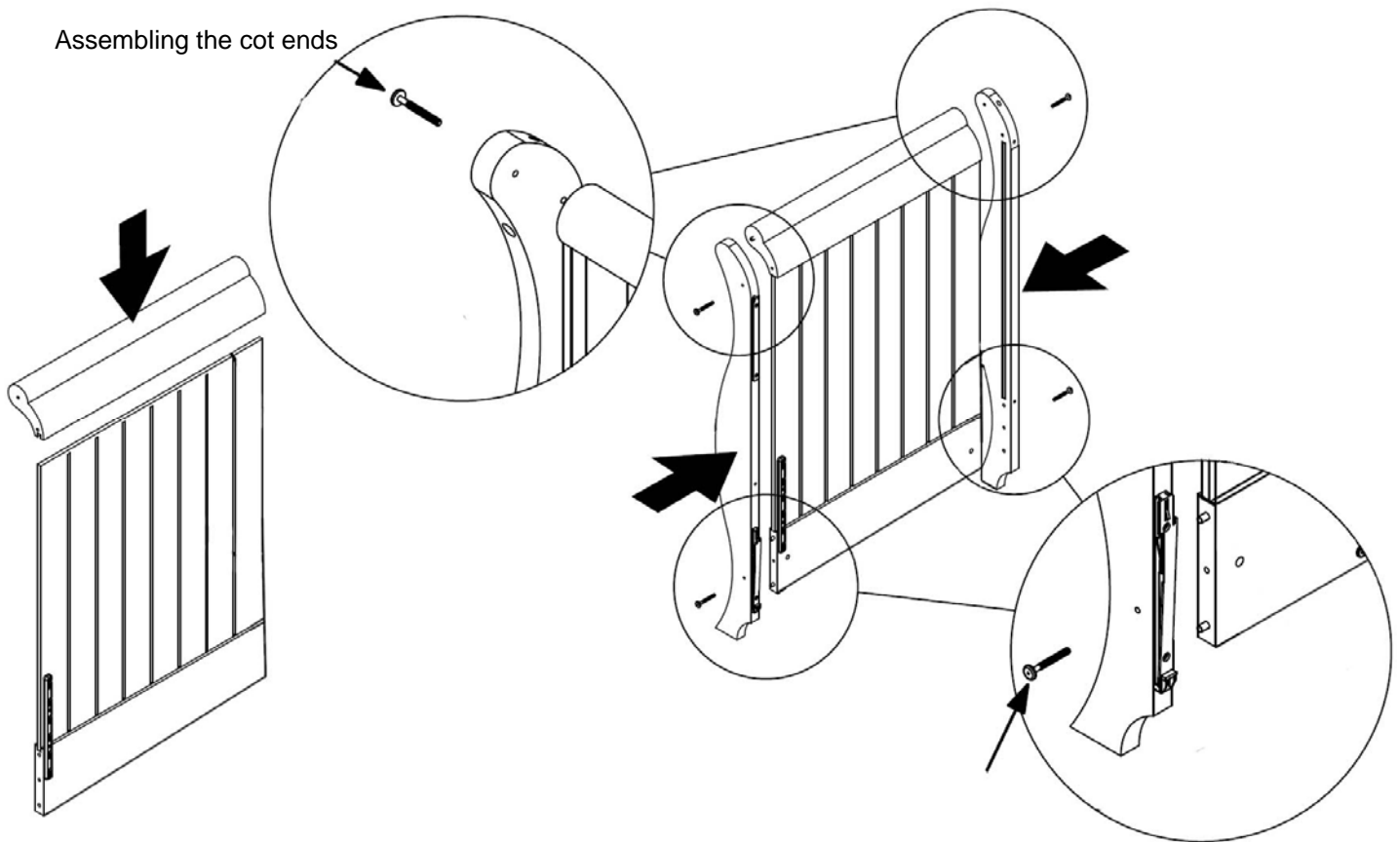


# HOLLIE SLEIGH-BED

## *Instructions for assembly & use*

### **To assemble the Sleigh-Bed as a cot:**

Assemble the two cot ends. Insert 1 large dowel in each end of each headboard top bar; insert 4 small dowels in each side of the headboard panels. Fit the front and back legs to the headboard panels and fasten using 4 60mm screws and 4 barrel fittings for each panel.



**Fit the large back fixed side** to the end panels using 4 x 105mm screws and 4 x barrel fittings and secure

Screw in the 4 mattress base supports at the desired height ensuring that the flat surface is horizontal

**Place the mattress base** on top of the 4 mattress base supports and fasten in place using 4 x 35mm screws

***You should always use the cot with the base in its lowest position as soon as your baby is old enough to sit unaided.***

# HOLLIE SLEIGH-BED

## *Instructions for assembly & use*

**Fit the front drop-side** cot side by locating the plastic fittings on the bottom ends of the cot side with the plastic fittings in the lower parts of the cot ends. Slide the cot side onto these lower fittings by 1 cm, when the lower fittings are located correctly, line up the upper fittings on the cot side and the cot ends and slide the cot side down until it clicks into position. Check the cot side is secure in all four corners.

### **To operate the drop-side:**

With the drop side in the highest position (closed position) hold the top rail of the cot side in the centre and lift (the side will lift approximately 1cm), while holding-up the cot side; push the bottom rail of the cot side in towards the centre of the cot (this is easiest using your leg) and lower the cot side, the side will drop to its lowest position (the open position).

To lift the cot side onto the closed position; hold the top rail in the centre and lift-up as far as the side will go then release the side and it will lock into the highest position.

***If you leave the child unattended in the cot, always make sure that the moveable side is closed.***

### **Adjusting the base height:**

The cot has a height adjustable base and can be adjusted to three positions. If the cot base is fitted remove it by releasing the 4 screws (one in each corner) and lifting it out of the cot. Reposition the base support screws to the desired height and replace the cot base securing it with a screw in each corner.

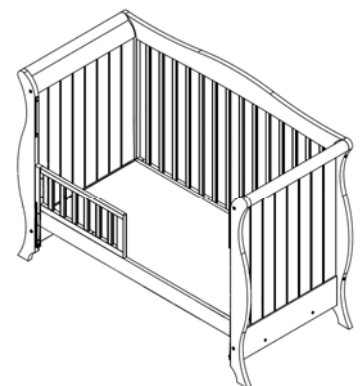
### **Removing the Drop-Side:**

Remove the drop-side by simultaneously pushing in the plastic clips on the bottom cot ends and lifting the cot side (this operation may be easier with two people). The cot side will slide off the fittings.

### **Fitting the Junior side:**

With the front drop-side removed the junior bed side can be fitted. Fit the junior side to the cot base and the end panel using the 3 screws.

Hollie Sleigh bed  
with Junior-bed side



# HOLLIE SLEIGH-BED

## **SAFETY ADVICE and WARNINGS**

- 1) The bottom mattress base position is the safest. You should always use the cot in the lowest position as soon as your baby is old enough to sit up.
- 2) **WARNING:** Do not leave anything in the cot or place the cot close to another product, which could provide a foothold or present a danger of suffocation or strangulation, e.g. strings, blind/curtain cords etc
- 3) **WARNING:** Do not use the cot if any part is broken, torn or missing and use only spare parts approved by the manufacturer.
- 4) If you leave the child unattended in the cot, always make sure that the moveable side is closed.
- 5) When choosing a mattress, ensure that the height between the surface of the mattress to the upper edge of the bed frame is at least 500mm in the lowest position and at least 200mm in the highest position of the bed base.
- 6) There should never be a gap of more than 30mm between the mattress and the sides or the ends of the cot.
- 7) Regularly check that nuts & bolts are secure and always check for evidence of damage, which could make the bed unsafe or cause splinters. Loose fittings can result in snagging clothes or cords posing a risk of strangulation.
- 8) **WARNING:** Do not use more than one mattress in the cot
- 9) Do not use a mattress with a depth greater than 100mm
- 10) We recommend the use of the Babystyle Dream sprung mattress for this cot (nominal size 1400mm x 700mm x 100).
- 11) **WARNING:** Be aware of the risk of open fire and other sources of strong heat, such as electric bar fires, gas fires etc, in the vicinity of the cot.
- 12) Clean with a damp cloth. Do not use abrasives or aggressive cleaning products.
- 13) To prevent injury from falls, as soon as the child is able to climb out of this cot, the cot should no longer be used for that child.

**THIS PRODUCT IS GUARANTEED FOR A PERIOD OF 6 MONTHS FROM THE DATE OF PURCHASE AGAINST FAULTY PARTS & WORKMANSHIP. IN THE UNLIKELY EVENT OF THE PRODUCT REQUIRING SERVICE OR REPAIR PLEASE CONTACT THE RETAIL OUTLET FROM WHICH THE PURCHASE WAS ORIGINALLY MADE.**

THIS PRODUCT HAS BEEN DESIGNED AND MANUFACTURED TO MEET BS EN 716-1: 2008

*FOR:*

Babystyle UK Ltd  
36 Charles Street  
Sileby, Leicestershire, LE12 7RJ

The logo for BabyStyle, featuring the word "Baby" in a bold, sans-serif font and "Style" in a larger, stylized font with a registered trademark symbol.

© Babystyle UK Ltd 1621/121208AJB