

SAFETY ADVICE 4

- 1) The bottom mattress base position is the safest. You should always use the cot in the lowest position as soon as your baby is old enough to sit up.
- 2) Never leave anything in the cot or attached to the sides, that could provide a foothold, or present a danger of strangulation or suffocation.
- 3) When choosing a mattress, ensure that the height between the surface of the mattress to the upper edge of the bed frame is at least 500mm in the lowest position and at least 200mm in the highest position of the bed base.
- 4) There should never be a gap of more than 40mm between the mattress and the sides or ends of the cot.
- 5) Regularly check that nuts & bolts are secure and always check for evidence of damage, which could make the bed unsafe or cause splinters. Loose fittings can result in snagging clothes or cords posing a risk of strangulation.
- 6) The maximum height (i.e. upper surface) of any mattress fitted must not exceed the line engraved on the inside of the cot leg. (EN716-1:1995)
- 7) We recommend the use of the Babystyle Rochingham "Kumfy Sprung" mattress for this cot.
- 8) Do not put cot in close proximity to heat sources e.g. open fires, radiators, gas and electric heaters etc.
- 9) Clean with a damp cloth. Do not use abrasives or aggressive cleaning products.
- 10) Warning: A child's safety is your responsibility.

THIS PRODUCT IS GUARANTEED FOR A PERIOD OF 6 MONTHS FROM THE DATE OF PURCHASE AGAINST FAULTY PARTS & WORKMANSHIP. IN THE UNLIKELY EVENT OF THE PRODUCT REQUIRING SERVICE OR REPAIR PLEASE CONTACT THE RETAIL OUTLET FROM WHICH THE PURCHASE WAS ORIGINALLY MADE.

THIS PRODUCT HAS BEEN DESIGNED AND MANUFACTURED TO MEET BSEN 716- 1 : 1996 FOR:

Babystyle UK Ltd
36 Charles Street
Sileby, Leicestershire, LE12 7RJ



Model

'CHARLIE'

Cot / Bed

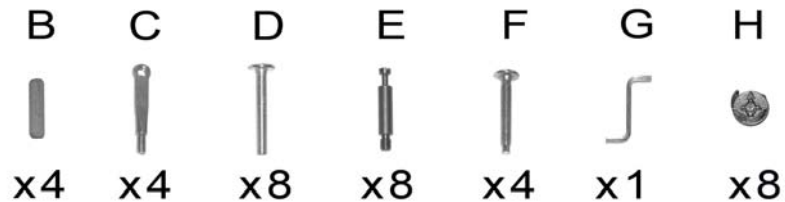


**Instructions for use
'IMPORTANT – RETAIN FOR FUTURE REFERENCE - READ CAREFULLY'**

Instructions for assembly. Important – Keep in a safe place for future reference

CHARLIE Cot-bed Instructions for assembly

Unpack the cotbed and identify the component parts as shown below, do not discard any packing until you have identified all of the components.



Along with the above parts you should also have:

2x cot sides; 1X cot/bed mattress base; 2x cot/bed ends; 4 x cot bun foot ;2x bed side supports

To assemble the cot:

If you are not using the optional storage drawer: Insert the eight barrels (H) into the the two side supports as shown opposite and follow the instructions below these diagram.

Attach the cot sides to the cot ends using the Allen key (G) and the eight screws (D). Two screws (D) are used at each end for each cot side.

Decide what height you require the cotbed mattress base and screw in to the cotbed ends all four base supports (C) at the same height. Make sure that the flat surface of the base support screw (C) is horizontal (the cotbed mattress base rests on the flat surface of these screws).

The height of the cotbed mattress base is determined by the position of the cotbed base support screws (C). The four support screws (C) should always be at equal heights.

Place the cotbed base inside the cotbed so that it rests on the base supports. The cross slats on the base should be level with the sides of the base. If the base is placed in the cot upsidedown there will be a step between the side of the base and the cross slats.

Screw the cotbed base in position using the four screws (F). Place each screw in one of the four corners from the top passing it through the base until it locates in the base support screw (C) then tighten the screw (F) with the Allen key.

To assemble the bed:

If the Charlie is assembled as a cotbed it must be disassembled before being assembled as a bed.

To disassemble unscrew the four screws (F) that secure the cotbed mattress base.

Unscrew the four base supports (C)

Unscrew the eight screws (D) that retain the cot sides and remove the four dowels (B).

Remove the four bun feet.

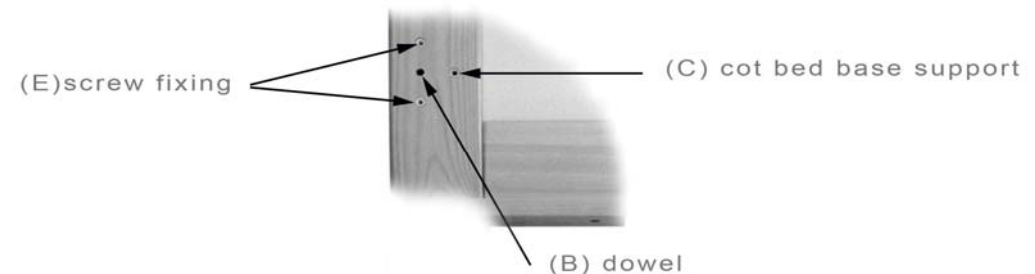
Remove the bottom section of the cot end that had the bun feet attached.

Attach the bun feet to the to the now shortened head and foot cot bed ends.

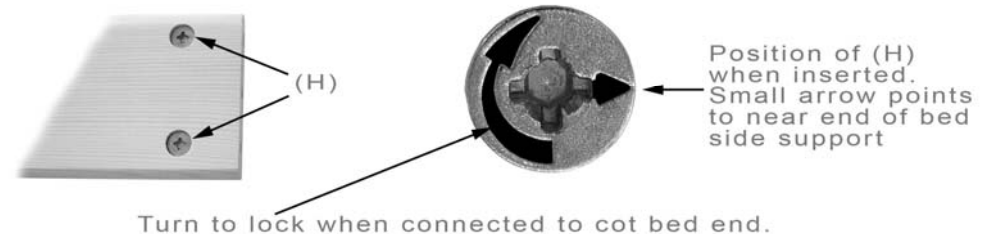
Insert the four cot bed base supports (C) as indicated below (two for each cotbed end).

Insert the eight screw fixings (E) as indicated below (two for each side, four for each cot bed end).

Insert the four dowels (B) as indicated below (two for each cot bed end



Insert the eight barrels (H) into the two bed side supports as shown below (two barrels at each end of each bed side support).



Connect each bed side support to the cot bed ends and lock the barrels by turning in the direction of the arrow (as indicated above) The bed side supports should be fitted with the radius edge pointing down.

Place the cot bed base onto the base supports (C) and screw into position with the four screws (F).

Check that all fixings are secure before use.